

Wildfire Stats in IRS

Rob Gazzard

Vegetation Fire

Fires that uses vegetation as the main fuel source.
Includes wildfire incidents and prescribed burning, as well as the use of suppression fires.

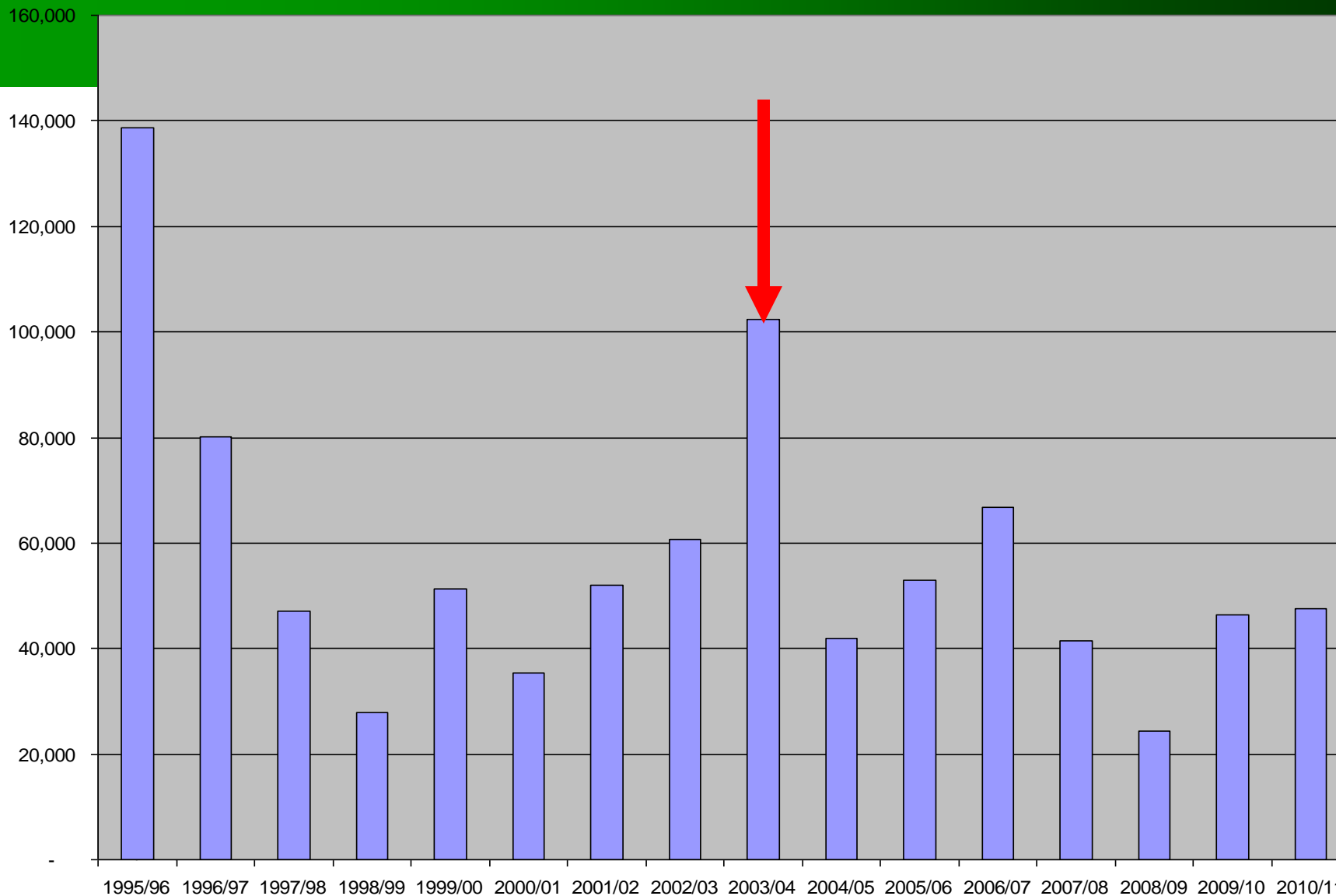
For example: forest, heath, grass and agricultural fires.

South East England **Wildfire** Group

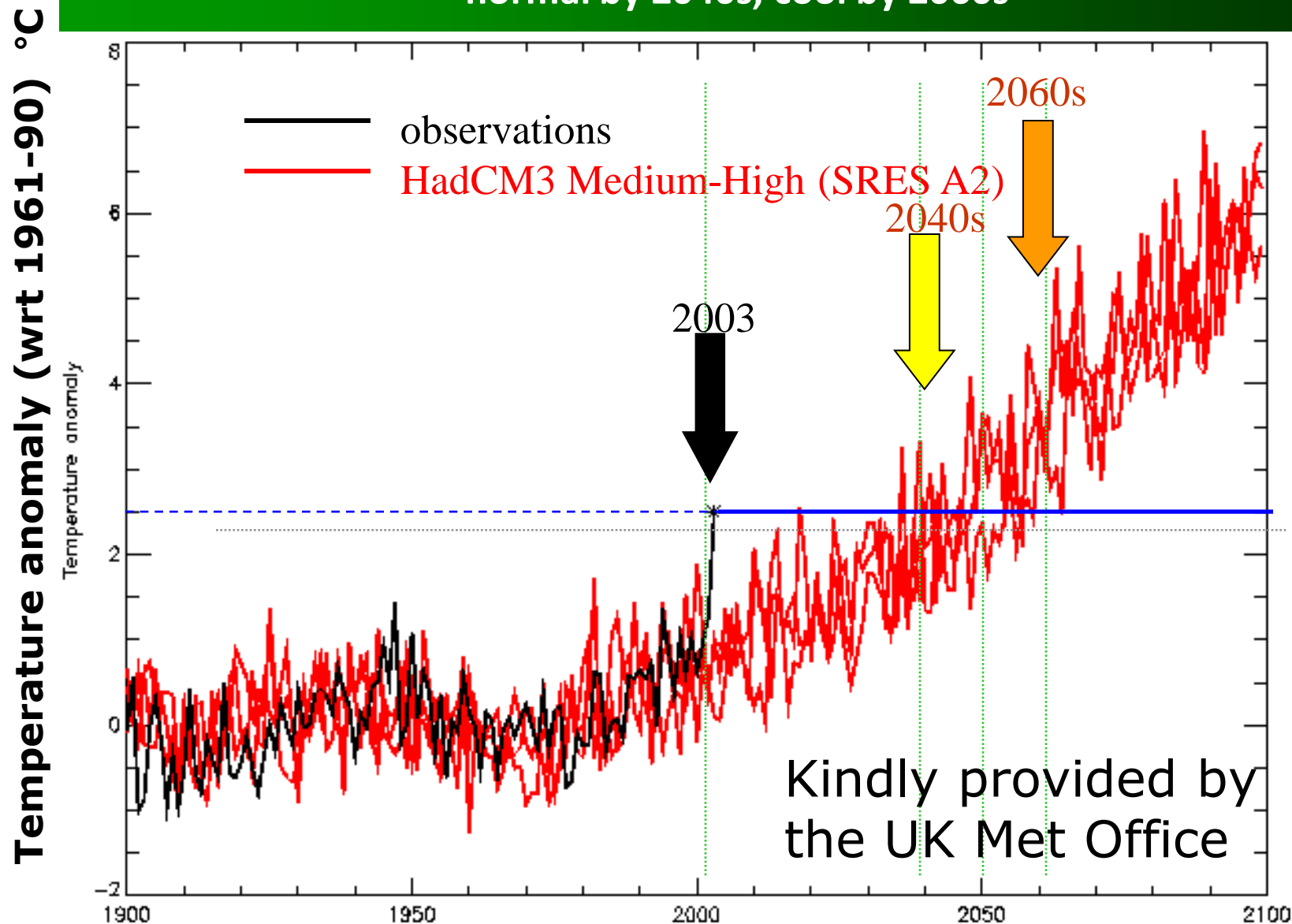
Life risk in the UK caused by wildfire



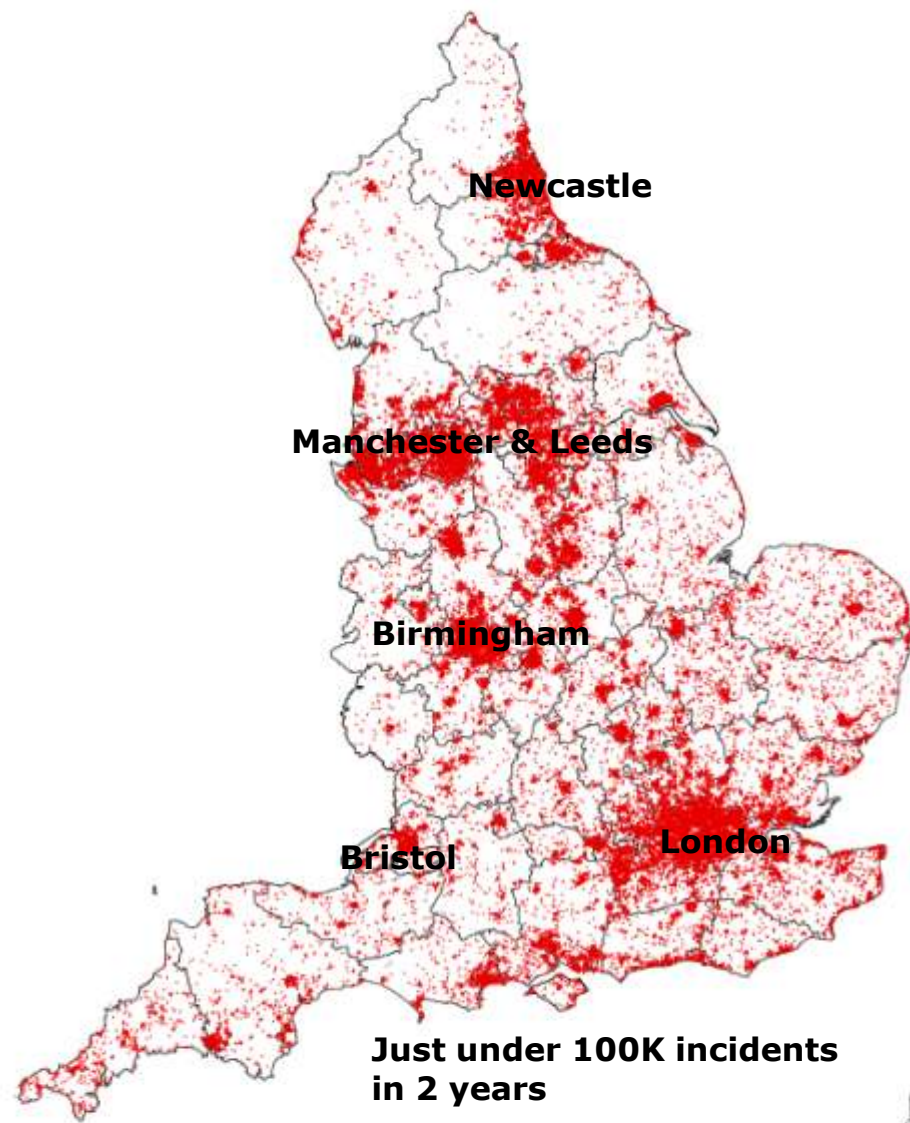
Wildfire incidents 1995 to 2010



European 2003 summer temperatures:
normal by 2040s, cool by 2060s

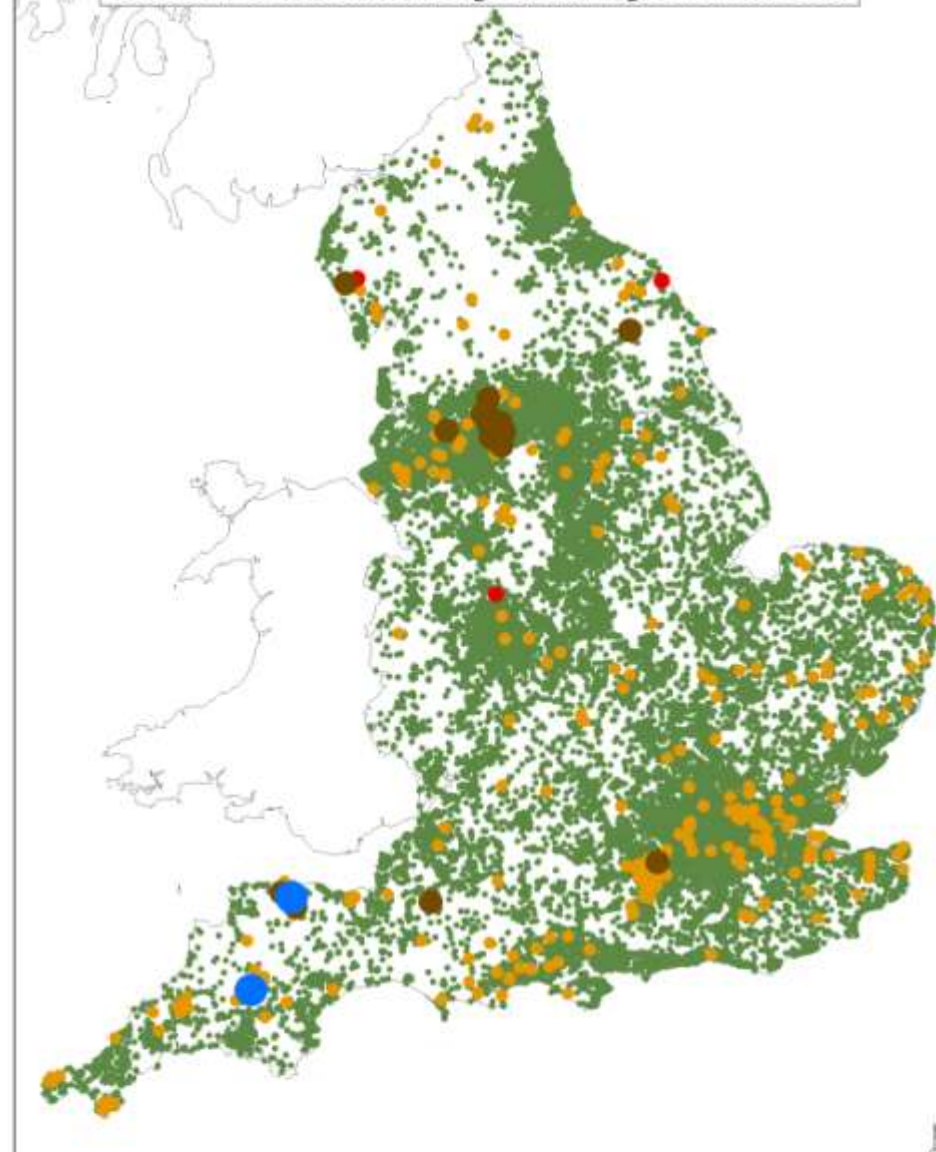


Incidences of wildfire in England (2009 and 2010)



- Wildfire incidence
- County boundaries
- Unitary Authority & District boundaries

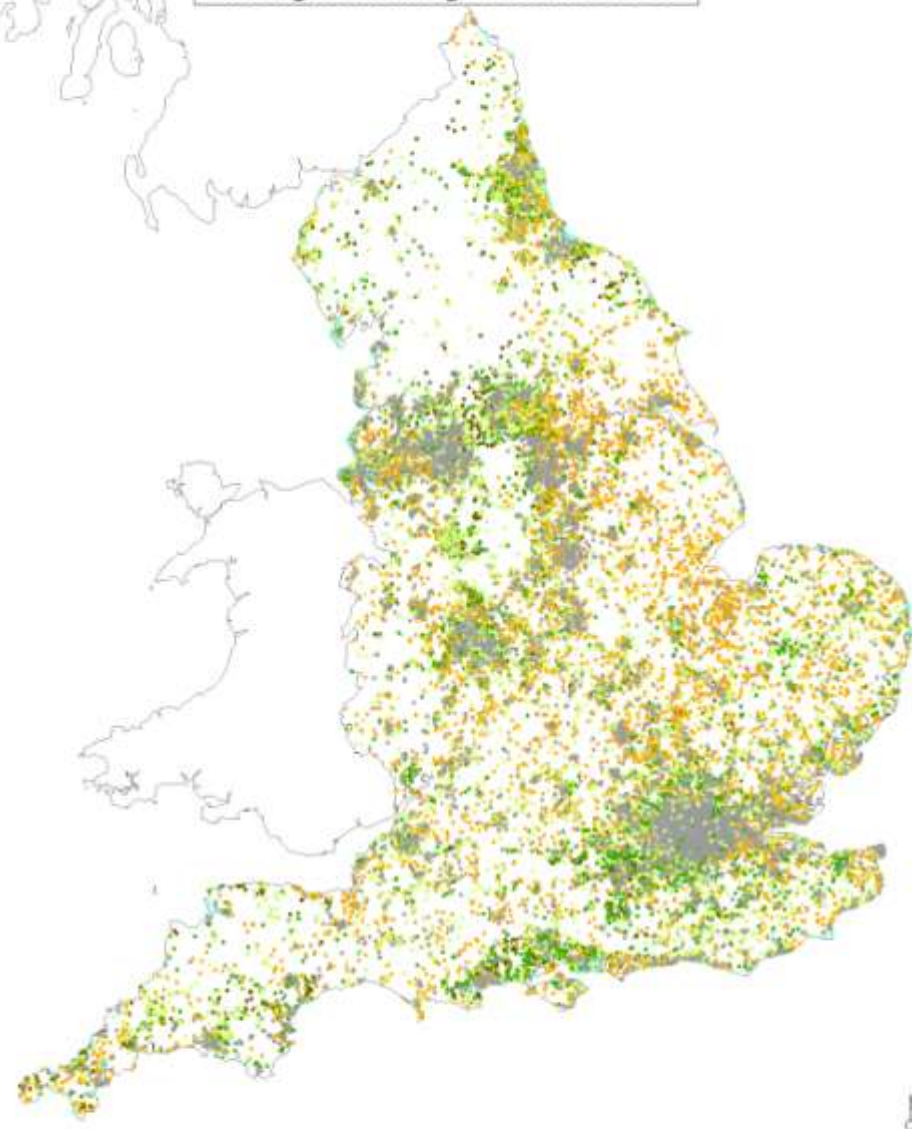
Locations of Wildfires in England during 2009 and 2010



- Fire size UKVFS classification***
- Landscape Scale (≥ 1000 ha)
 - Very Large (100 - 999 ha)
 - Large (50 - 99 ha)
 - Medium (1 - 49 ha)
 - Small (0.0001 - 1 ha)

*Symbols not directly proportional to fire size

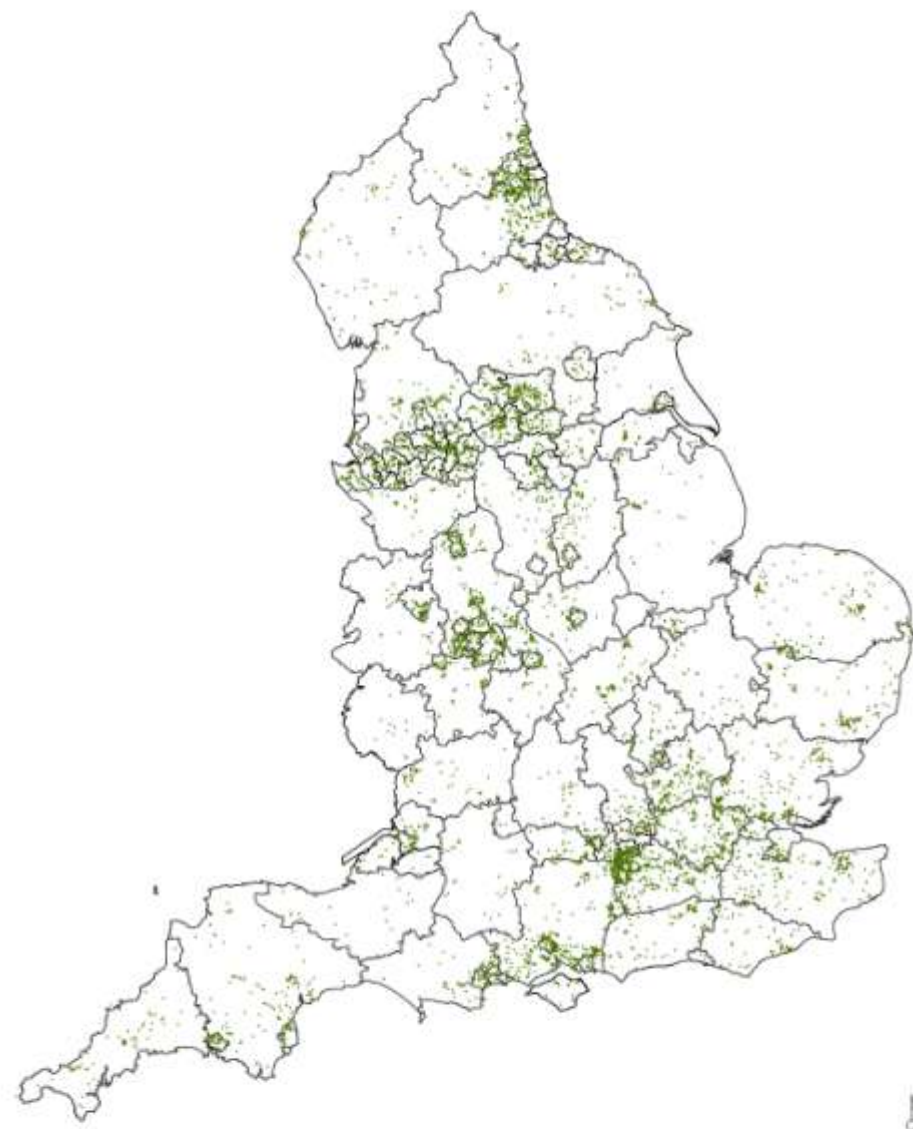
**Broad land cover types for wildfires
in England during 2009 and 2010**



Broad land cover types from LCM 2007

- Woodland
- Built-up areas and gardens
- Mountain, heath, bog
- Coastal, fresh and salt water
- Arable
- Grassland

Incidences of woodland wildfires in England (2009 and 2010)



- Woodland wildfire incidence
- County boundaries
- Unitary Authority & District boundaries

Wildfire and Forest Fire Summary

Between April 2009 to March 2011 England's Fire and Rescue Services attended:

- Just under 100,000 wildfire incidents
- with 11,400 hectares burnt in England

Forest fires accounted for:

- 11% of all wildfires or over 10,900 incidents
- 12% of the area burnt or approx. 1,400 hectares

Other wildfire incidents

Forest fires compared to other wildfires:

- **Urban wildfire** - 50K incidents (50%) but only 900 ha burnt (8%)
- **Open Habitats** - 5,100 (5%) incidents but significantly larger areas burnt 5,600 ha (50%) of semi-natural grasslands, mountainous, heathlands and bogs
- **Agriculture** - 14K incidents (32%) and 4,800 ha (35%) burnt arable and improve grassland
- **Other** - 900 incidents (>1%) and 58 ha burnt of coastal, freshwater and saltwater land use (0.5%)

FRS Response to Wildfires

- Total FRS Vehicle Hours: 366,201
- Average FRS Duration and Vehicle Hours: 2 to 3.40 hours
- Primary Fires: 5,235
- Cost to FRS of vehicle response to wildfire incidents: up to £110M (using an appliance valued at £300 per hour)



Hampshire Outdoor Fire Incidents 2009-2010

On FC Land

Outdoor Fires on FC Land

FC Land

Hampshire County

Breakdown
110 Total Outdoor Fire Incidents on FC Land 2009-2010

By Property Type:

- Tree Scrub - 58%
- Heathland or Moorland - 17%
- Straw Stubble Burning - 8%
- Grassland, Pasture, Grazing etc - 8%
- Woodland/Forest (Conifer/Softwood) - 6%
- Roadside Vegetation - 2%
- Domestic Garden (Vegetation) - 1%

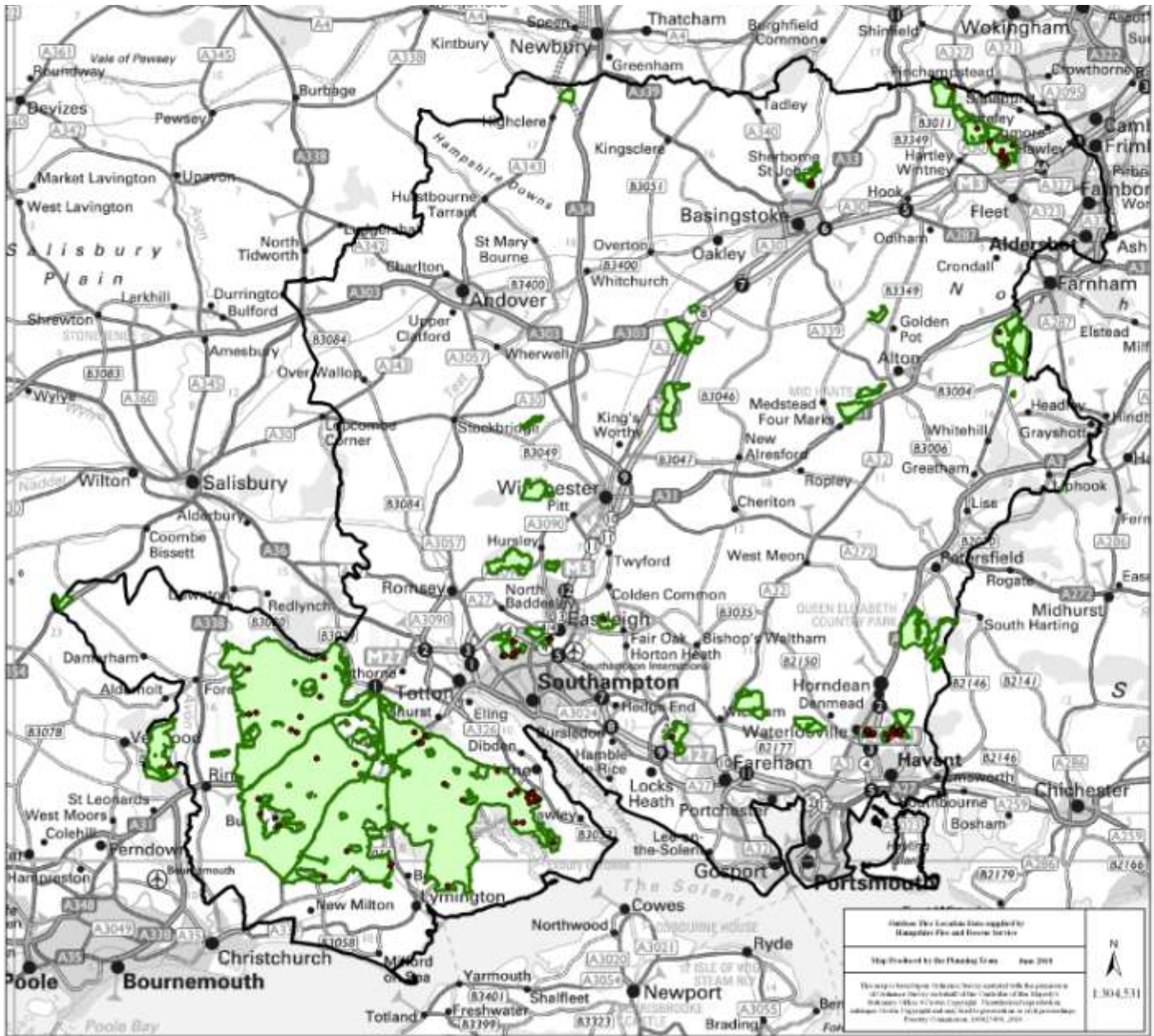
By Cause/Motive:

- Accidental - 16%
- Deliberate - 48%
- Unknown - 36%

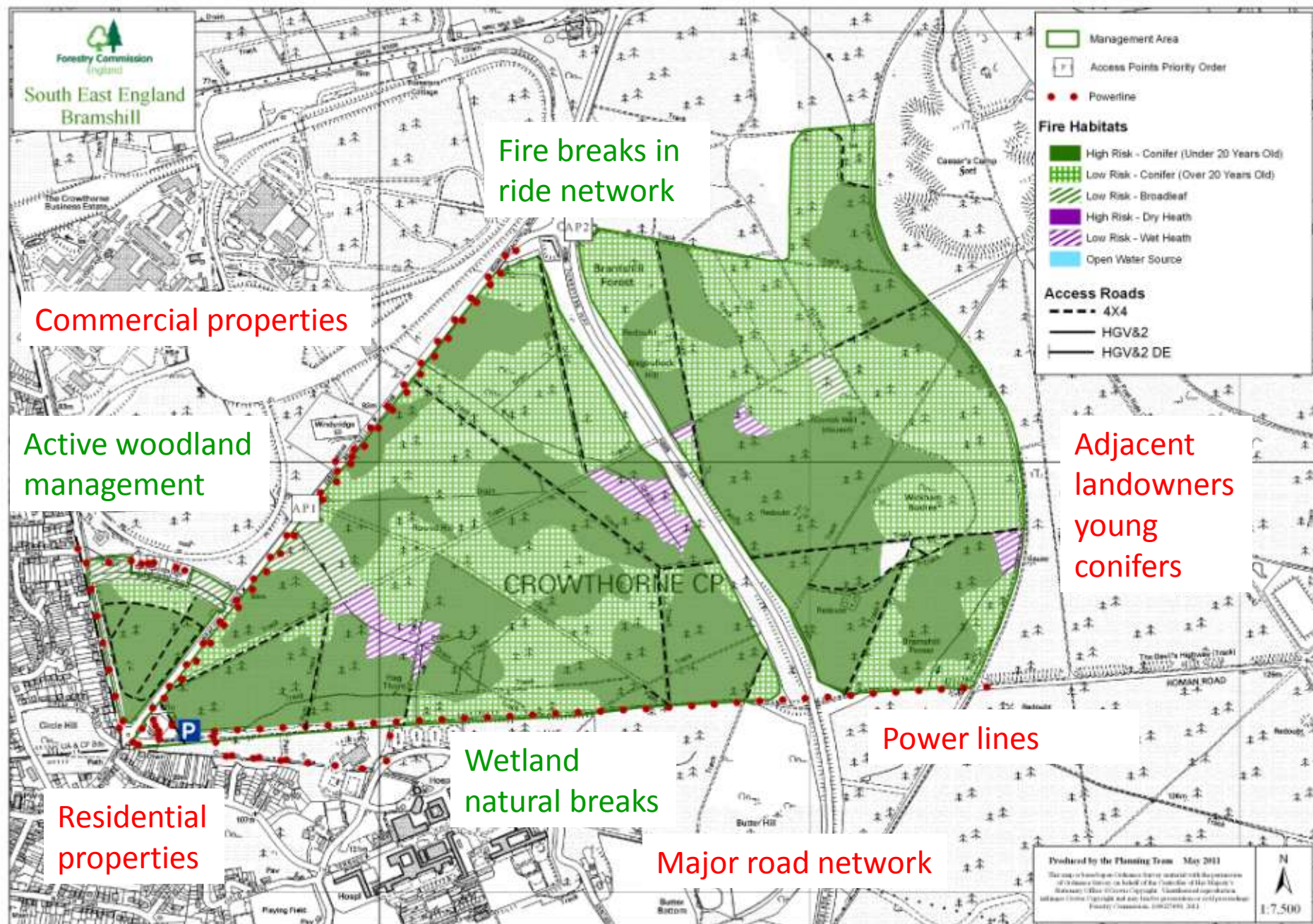
Incidents Per Month (April '09 - March '10)

Jan '10 - 2%	July '09 - 18%
Feb '10 - 0%	Aug '09 - 12%
March '10 - 5%	Sept '09 - 17%
April '09 - 8%	Oct '09 - 8%
May '09 - 10%	Nov '09 - 0%
June '09 - 19%	Dec '09 - 1%

(76% of Incidents occurred May '09 - Sept '09)



South East England **Wildfire** Group



South East England **Wildfire** Group



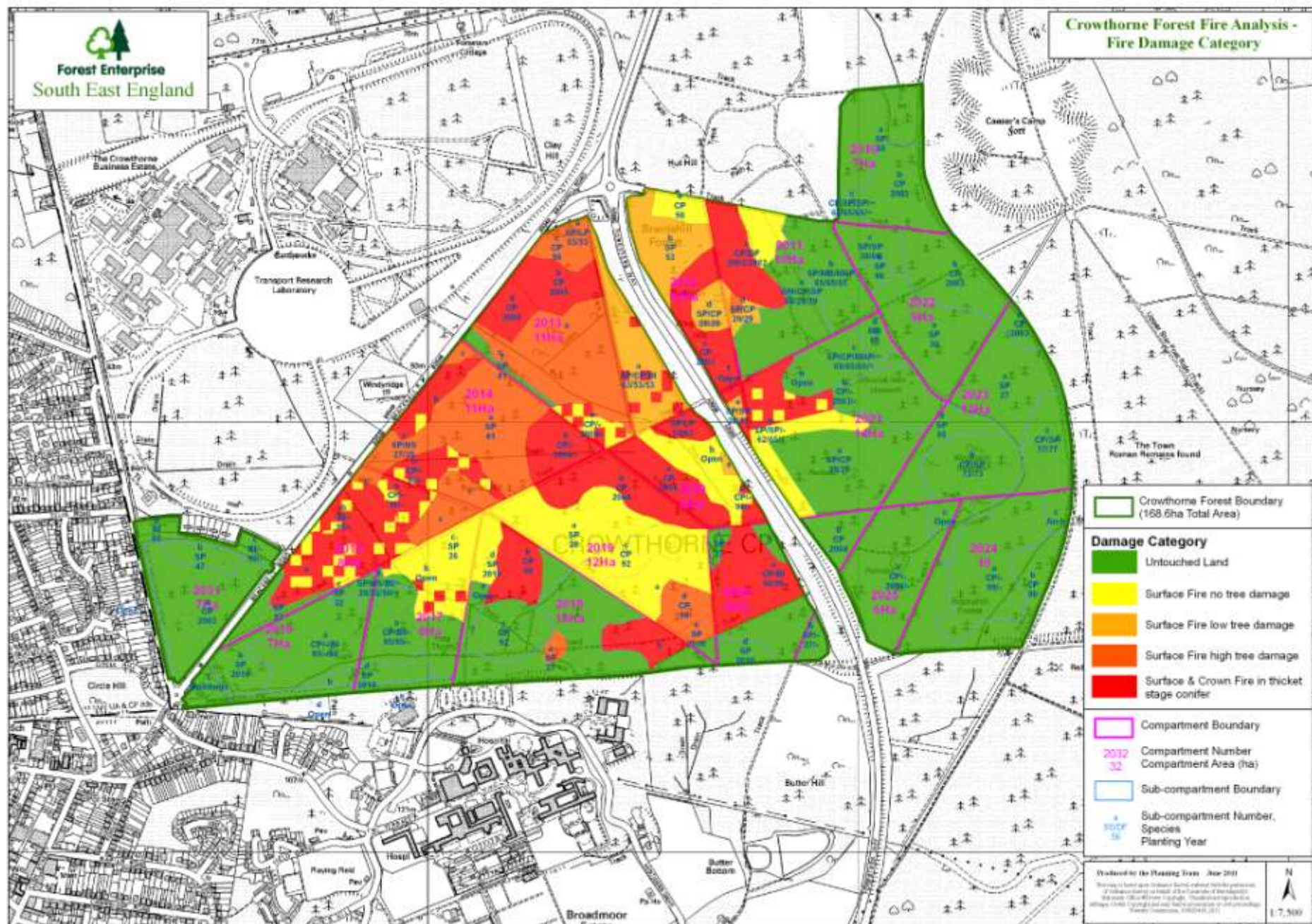
09/02/12

FRSUG

South East England **Wildfire** Group



South East England Wildfire Group



Rob Gazzard

Questions?

South East England Wildfire Group

robert.gazzard@btinternet.com

07985 956260